

Table of Contents

Page	Topic
P.1	Why Out-of-Band (OOB)? & Why DFI's OOB?
P.2	DFI Out-of-Band (OOB) Functions List
P.3~	DFI Out-of-Band (OOB) Supported Models List

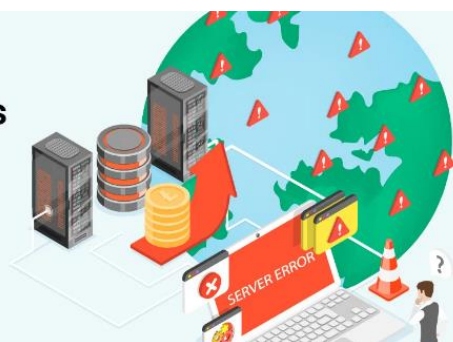
Why Out-of-Band (OOB)? & Why DFI's OOB?

Unexpected downtime disrupts operations and finances, halting production, delaying deliveries, and causing hidden costs like restart expenses, missed deadlines, supply chain issues, and fixed overheads. This highlights the need for proactive, reliable OOB solutions to minimize interruptions. However, many options are expensive due to high hardware and cloud costs. How can you find a cost-effective solution?

Did you know that
90% of downtime begins
with a simple reboot?

Even more surprising, over 70% of devices recover after a reboot. So why waste time?

Save the trip,
Reduce downtime cost





DFI Market-leading Out-Of-Band (OOB) Solutions

	DFI OOB Solution	Intel	Other OOB Solutions
Tech.	cBMC (Compact BMC)	vPRO	N/A
Price	<ul style="list-style-type: none"> Best Cost-Value 	<ul style="list-style-type: none"> Expensive 	<ul style="list-style-type: none"> Cost of HW & Cloud
Function	<ul style="list-style-type: none"> Designed for IPC Applications Cover 70% of IPMI functions Advanced remote BIOS Update Remote OS Recovery & Updates During Shutdown Assign Boot Partition to Switch OS Before Reboot 	<ul style="list-style-type: none"> Supports i5 and Higher Processors 	<ul style="list-style-type: none"> Limited functions





DFI's OOB solutions provide cost-effective functionality for industrial PCs, delivering up to 70% of server-grade BMC capabilities. They offer secure, independent remote access for quick actions like reboots and firmware updates, even during shutdown. By reducing downtime, on-site IT needs, and recovery costs, they enhance security, protect critical applications, and streamline maintenance to minimize disruptions and impacts.

Manage the hidden costs of downtime—lost revenue, productivity, and recovery expenses. Discover how DFI's cBMC OOB solutions for industrial PCs offer advanced, cost-efficient features to minimize disruptions and maximize efficiency. Explore [this article](#) and [video](#) to learn more.



-  Remote on/off device
-  Remote Bios Update even when system shut down
-  Remote Bios setup & UEFI Shell (serial over LAN)
-  Remote HW monitoring & trouble shooting
-  Remote Desktop (in-Band)
-  OS Image Remote Recovery

DFI Out-of-Band (OOB) Functions List

Type	M.2 Module	Carrier Board		BOX	On board
					
OOB Model Name	M2A-OOB	EXT-OOB		RM101-OOB	OOB
DFI OOB Features	OOB-Full	OOB-Full	OOB-Lite	OOB-Lite	OOB-Full
Open SSH Login	✓	✓	✓	✓	✓
Remote power on/off & reset control	✓	✓	✓	✓	✓
Remote hardware monitor log (I2C for SMBus)	✓	✓	✗	✗	✓
Recovery (Factory mode)	✓	✓	✓	✓	✓
Remote BIOS setup & UEFI shell	✓	✓	✓	✓	✓
Remote BIOS update (SPI)	✓	✓	✗	✗	✓
Remote BIOS update (USB)	✓	✓	✓	✓	✓
Remote Recovery OS Image	✓	✓	✓	✓	✓



DFI Inc.

10F, No.97, Sec.1, Xintai 5th Rd.,
Xizhi Dist., New Taipei City 221416,
Taiwan (R.O.C.)
Tel: +886(2)2697-2986

DFI Out-of-Band (OOB) Supported Models List

OOB Model Name	M2A-OOB	EXT-OOB		RM101-OOB	OOB
DFI OOB Features	OOB-Full	OOB-Full	OOB-Lite	OOB-Lite	OOB-Full
EATX					
ATX	✓ RPS630-R680E ✓ ARS630-W880/Q870		✓ CMS630-W480E/Q470E ✓ CMS631-Q470E/H420E ✓ CMS632 ✓ W480E/Q470E ✓ ADS630-R680E/Q670E		
microATX		✓ RPS310-R680E/Q670E ✓ RPS330-Q670E/H610E	✓ CMS310-W480E/Q470E ✓ CMS330-Q470E/H420E ✓ CMS311-W480E/Q470E ✓ ADS310-R680E/Q670E		
Mini-ITX		✓ RPS183-Q670E/H610E ✓ RPS101/103-R680E/Q670E/H610E ✓ HPT171 ✓ ARH171/173			
PICMG 1.3	✓ RPSPIC				

**DFI Inc.**

10F, No.97, Sec.1, Xintai 5th Rd.,
Xizhi Dist., New Taipei City 221416,
Taiwan (R.O.C.)
Tel: +886(2)2697-2986

3.5" SBC					
4" SBC					✓ ADN253 (Opt.) ✓ MTH253 ✓ ASL253 (Opt.)
Ultra Compact Fanless PC					✓ EC700-ADN/EC710-ADN ✓ EC700-ASL/EC710-ASL
Embedded Fanless PC	✓ EC600-RPS ✓ EC622-RPS ✓ EC633-RPS				
AI Inference/Training System	✓ X6-ORN ✓ X6-MTH ✓ X6-MTH-ORN				
Open Frame Panel PC					✓ KIT070P-ADN ✓ KIT101P-ADN ✓ KIT121P-ADN